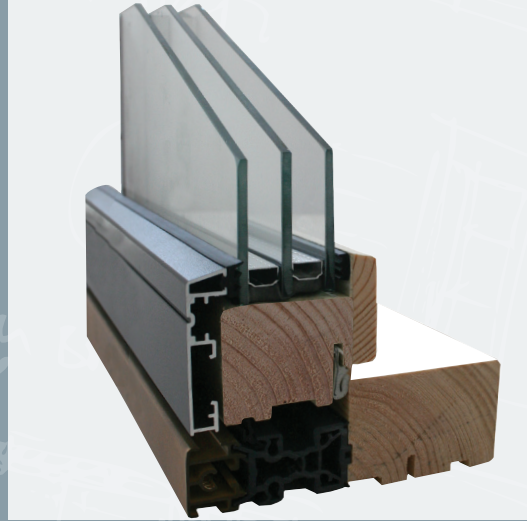


# KRONE Coto®

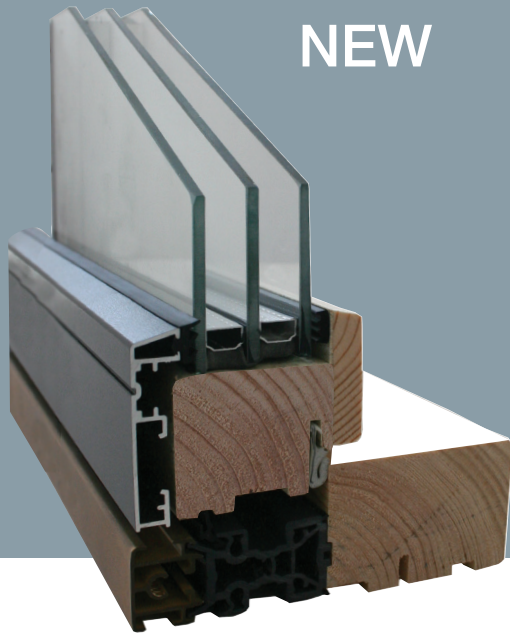
- meets the highest demands on energy and insulation..



**KRONE**®  
**VINDUER**

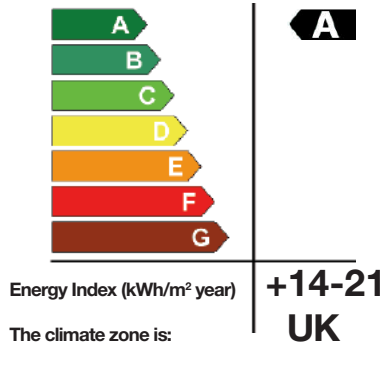
# New Energy Window System from KRONE VINDUER that meets the highest demands on energy and insulation.

KRONE Vinduer presents "COtoSystem" A Super Low "E" energy-saving window system. COto® has a documented U-value as low as 0,5 W/m<sup>2</sup>K for the combined frame and glazing. This superb value is achieved by combining a 48 mm Super Low "E" Triple Glazed Unit with a innovatively designed insulated frame. This means that when compared to a standard Double Glazed system that over 70% of energy is saved by using our New COto System.



NEW

## Energy Window



KRONE VINDUER  
COto® window system  
Danish produced  
Flexible  
Future proof



## FACTBOX

### U-value

is a factor that indicates the energy loss, which is through a window or door. A low figure is equal to good insulation properties. U-values on modern windows normally are in the range from 0.6 to 1.8 W/m<sup>2</sup>K.

### G-value

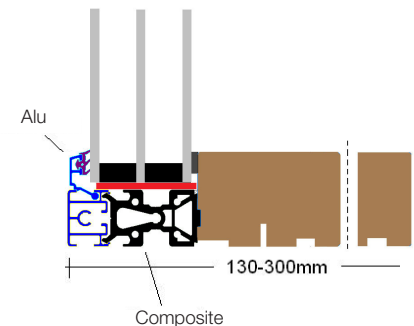
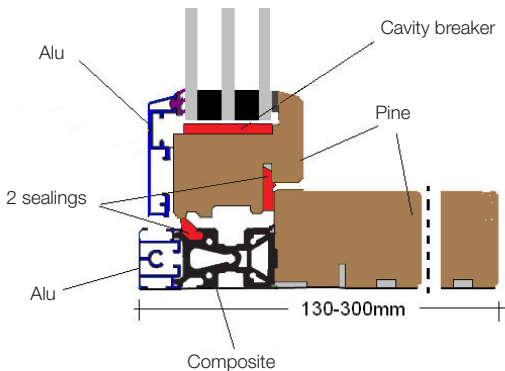
the energy passes through the glass from outside by sunlight is called energy transmission, and are measured in G value. A high value is equal to the high heat flow. G values seen in the range from 0.3 to 0.64

### E.ref

E.ref (use on the Danish sun and weather condition average calculation) in order to compare windows on equal basis a unified measuring system is developed called E.ref.  
The calculation is based on a "standard" window sized 1,23m x1, 48m, and the calculation is: E.ref = (G-value x 196.4) - (U-value x 90.36).

Note it is the total U-value of the entire window and corrected G value.

A positive E.ref means that window contributes energy throughout the year. It is only optimized window systems which currently are able to present a positive value.



### TECHNICAL SPECIFICATIONS:

#### Reference window 1,23 m x 1,48 m

Window with opening 62 mm rebate  
3 layer glazing with Argon and warm edge 0.51-0.6 W/m<sup>2</sup>K  
U-Value for the entire window 0.77-0.85 W/m<sup>2</sup>K  
E.ref for the entire window 5.1-17.1 kWh/m<sup>2</sup> year  
Window energy contribution 9.2-31 kWh/year

### TECHNICAL SPECIFICATIONS:

#### Reference window 1,23 m x 1,48 m

Window with fixed frame 62 mm rebate  
3 layer glazing with Argon and warm edge 0.51-0.6 W/m<sup>2</sup>K  
U-Value for the entire window 0.65-0.74 W/m<sup>2</sup>K  
Energi balance for the entire window 27.5-40.6 kWh/m<sup>2</sup> year  
Window energy contribution 50.0-74 kWh/year

### KRONE VINDUER A/S

Is a 100% Danish based order manufacturing company, which has manufactured windows and doors for more than 50 years.

### KRONE VINDUER A/S

Are today one of the leading manufacturers of low energy windows.



**KRONE**  
VINDUER

### KRONE VINDUER A/S

Aalborgvej 570  
Harken  
DK-9760 Vrå  
DENMARK

Telephone +45 9624 2860  
Telefax +45 9624 2861

www.kronevinduer.dk