

# COto ENERGY



Wood/aluminium window  
- with a through-going wood ringe



**Energy class:**  
A



**Burglar-proof:**  
RC2-approved



**Noise reduction:**  
Up to 46 dB Rw+Ctr



**U-value for the entire window:**  
0,86 W/m<sup>2</sup> K



**Materials:**  
Wood/aluminium



**E<sub>ref</sub>:**  
+0,4 kWh/m<sup>2</sup>

## // ELEGANT DESIGN

A simple, yet elegant window design.

## // OPTIONAL TYPE OF WOOD

The inside of the window is available in a variety of wood species. Contact us and tell us what you prefer.

## // VALUE FOR MONEY

A solid and economical alternative to wood/aluminium windows with composite rebate.

## // ENERGY AND ENVIRONMENT

Available with a triple-glazed low-energy glass, this window meets even the strictest requirements of the building regulations.

## // EASY MAINTENANCE

The outer aluminium part ensures a long life and minimal maintenance.

## // GREAT FLEXIBILITY

The windows are available in very large dimensions, as a combination of fixed frame and elements with openable sashes.

## // CHILD PROTECTION

All our windows and doors can be optionally fitted with child-protection.

## // ANTI-THEFT

All our elements are available with optional additional anti-theft protection to keep uninvited guests out.

## // FIRE PROTECTION

The windows are also available as fire windows in accordance with EI30-60. Their elegant design intact, fire windows with fixed frames are similar in appearance to a standard window.



# Coto ENERGY

Wood/aluminium window  
- with a through-going wood ringe



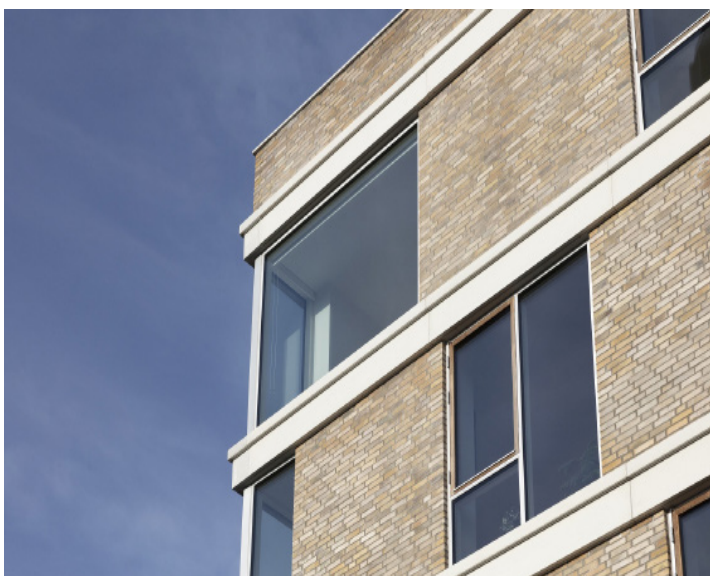
COTO ENERGY // WOOD/ALUMINIUM



COTO ENERGY // WOOD/ALUMINIUM



COTO ENERGY // WOOD/ALUMINIUM



COTO ENERGY // WOOD/ALUMINIUM

