

# KRONE ENERGY



Wood/aluminium window  
- with a through-going wood ringe

**Energy class:**

A

**E<sub>ref</sub>:**

+0,4 kWh/m<sup>2</sup>/yearly

**Noise reduction:**

Up to 40 dB Rw+Ctr

**U-value for the entire window:**

As from 0,86 W/m<sup>2</sup> K

**Materials:**

Wood/aluminium



Driving rain resistance up  
to 2100 Pa

**// ELEGANT DESIGN**

A simple, yet elegant window design.

**// OPTIONAL TYPE OF WOOD**

The inside of the window is available in a variety of wood species. Contact us and tell us what you prefer.

**// VALUE FOR MONEY**

A solid and economical alternative to wood/aluminium windows with composite rebate.

**// ENERGY AND ENVIRONMENT**

Available with a triple-glazed low-energy glass, this window meets even the strictest requirements of the building regulations.

**// EASY MAINTENANCE**

The outer aluminium part ensures a long life and minimal maintenance.

**// GREAT FLEXIBILITY**

The windows are available in very large dimensions, as a combination of fixed frame and elements with openable sashes.

**// CHILD PROTECTION**

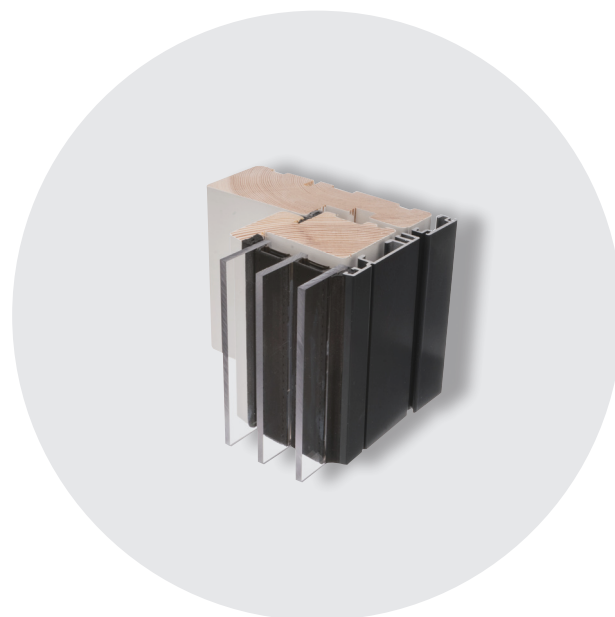
All our windows and doors can be optionally fitted with child-protection.

**// ANTI-THEFT**

All our elements are available with optional additional anti-theft protection to keep uninvited guests out.

**// FIRE PROTECTION**

The windows are also available as fire windows in accordance with EI30-60. Their elegant design intact, fire windows with fixed frames are similar in appearance to a standard window.



# KRONE ENERGY

Wood/aluminium window  
- with a through-going wood ringe



KRONE ENERGY // WOOD/ALUMINIUM



KRONE ENERGY // WOOD/ALUMINIUM



KRONE ENERGY // WOOD/ALUMINIUM



COTO ENERGY // WOOD/ALUMINIUM

