

Sliding door KRONE

Combines indoors and outdoors
- in an elegant solution



Energy Class:

A



U-value for the entire sliding door:

0,65-0,8 W/m² K



Materials:

Wood/aluminium, pine wood,
hard wood



E_d:

+5,8 kWh/m²



Sizes:

Up to 6 m wide*

Up to 2,8 m height*

// ELEGANT DESIGN

The sliding door features a minimalist design.
Flush pull handle and slim profiles.

// LEVEL-FREE ACCESS

The low bottom step provides easy access
through the sliding door and the combination of
aluminium and composite materials provides a
strong and cold-resistant product.

// 2- AND 3-PANEL MODELS

The sliding door is available with one or two
moveable panels.

// LARGE INFLOW OF LIGHT

The sliding door features narrow frames and the
slanted frame structure provides an impressive
inflow of light.

// EASY MAINTENANCE

If you choose the outer part in aluminium you
are ensured minimal maintenance.

// POSITIVE ENERGY BALANCE

Triple-glazed super low-energy glass means that,
when seen throughout the year, the sliding door
lets in more heat than it gives off.

// CHILD PROTECTION

As the rest of our assortment we offer our
sliding door with child-protection.

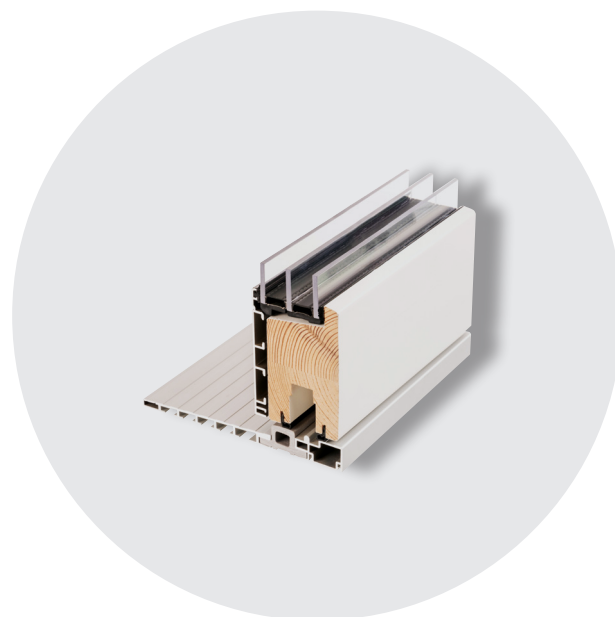
*Please note: The 2-panel sliding door can max. be
10 m², and the 3-panel sliding door max. 15 m².

// ANTI-THEFT PROTECTION

The sliding door is as good as impossible to break
open, as it is closed by means of 2 12-mm steel
bolts with a pull-out force of 800 kg each.

// CHOICE OF MATERIAL

The sliding door is available in a variety of
material combinations, for instance a moving part
made of hard wood combined with fixed parts
made of aluminium. An exclusive and elegant
choice for the quality conscious customer.



B-800-17/18.05.2021

Sliding door KRONE

Reference pictures



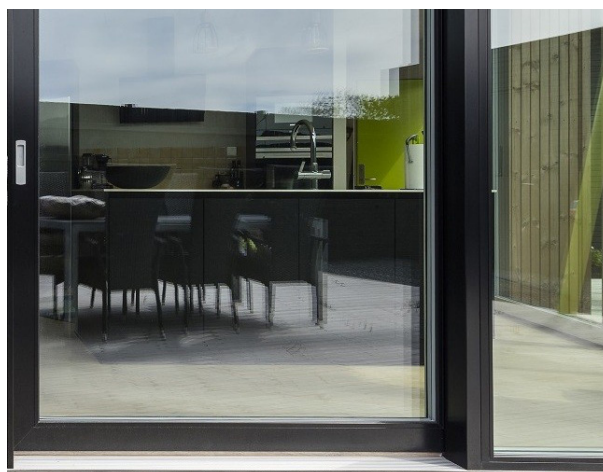
SLIDING DOOR // WOOD/ALUMINIUM, 3-PANELS



SLIDING DOOR // MAHOGANY



SLIDING DOOR // WOOD/ALUMINIUM



SLIDING DOOR // OAK



SLIDING DOOR // WOOD/ALUMINIUM

