

Sliding door KRONE



Combines indoors and outdoors
- in an elegant solution



Energy Class:
A



U-value for the entire sliding door:
0,65 W/m² K



Materials:
Wood/aluminium, pine wood,
hard wood



E_d:
+5,8 kWh/m²



Sizes:
Up to 6 m wide
Up to 2,7 m height

// ELEGANT DESIGN

The sliding door features a minimalist design. Flush pull handle and slim profiles.

// LEVEL-FREE ACCESS

The low bottom step provides easy access through the sliding door and the combination of aluminium and composite materials provides a strong and cold-resistant product.

// 2- AND 3-PANEL MODELS

The sliding door is available with one or two moveable panels.

// LARGE INFLOW OF LIGHT

The sliding door features narrow frames and the slanted frame structure provides an impressive inflow of light.

// EASY MAINTENANCE

If you choose the outer part in aluminium you are ensured minimal maintenance.

// POSITIVE ENERGY BALANCE

Triple-glazed super low-energy glass means that, when seen throughout the year, the sliding door lets in more heat than it gives off.

// CHILD PROTECTION

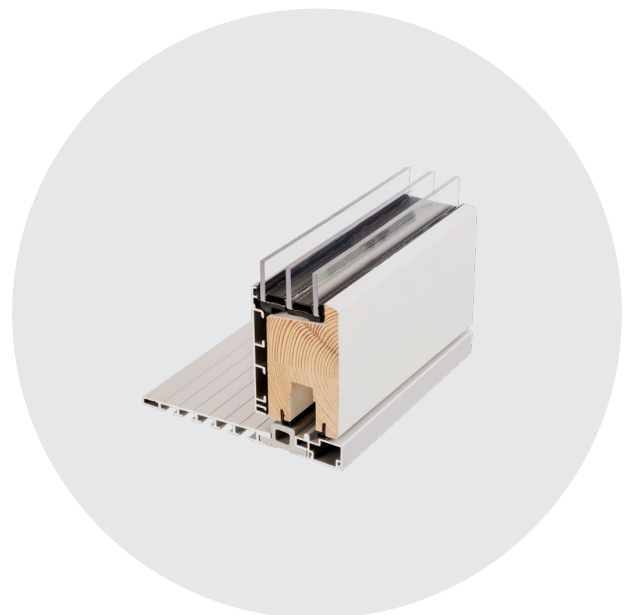
As the rest of our assortment we offer our sliding door with child-protection.

// ANTI-THEFT PROTECTION

The sliding door is as good as impossible to break open, as it is closed by means of 2 12-mm steel bolts with a pull-out force of 800 kg each.

// CHOICE OF MATERIAL

The sliding door is available in a variety of material combinations, for instance a moving part made of hard wood combined with fixed parts made of aluminium. An exclusive and elegant choice for the quality conscious customer.



Sliding door KRONE

Combines indoors and outdoors
- in an elegant solution



SLIDING DOOR // WOOD/ALUMINIUM,3-PANELS



SLIDING DOOR // MAHOGANY



SLIDING DOOR // OAK



SLIDING DOOR // WOOD/ALUMINIUM

